



chemfeed

Exclusive Griffco distributor
 Regulierenring 26
 NL-3981LA Bunnik
www.chemfeed.nl
info@chemfeed.nl
 Tel: +31 88 022 5300

BPMP-SERIES BACK PRESSURE VALVES



Griffco BPMP-Series diaphragm back pressure valves are designed to enhance the performance of chemical feed systems by applying a continuous back pressure to the chemical feed pump, while also acting as an anti-siphon valve. Robust construction ensures reliability in the rigorous service of municipal and industrial applications. Wetted materials include: **316 SS, Alloy 20, Hastelloy C,** and **Titanium**. Available sizes: 1/4" – 1".

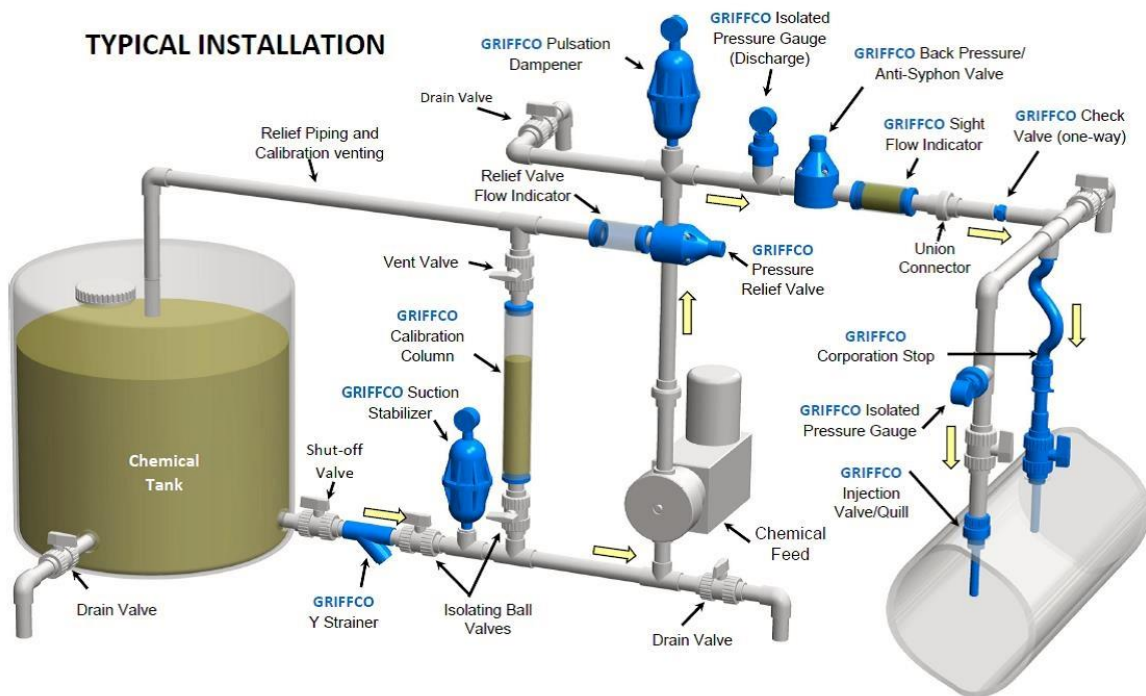
Features:

- 7 – 55 bar Pressure Range
- High Reliability/Low Cost
- Multiple Diaphragm Options
- Adjustable Pressure Range
- Anti-Siphon Function
- Robust, Machined Construction
- Tamper Resistant Adjustment Screw
- Wide Range of Materials

Operation:

Griffco diaphragm back pressure valves apply positive discharge pressure to a metering pump system to prevent siphoning and eliminate varying dosage rates caused by fluctuating downstream pressure. The diaphragm is held against the valve seat by an internal spring. When the pre-set pressure is exceeded, the diaphragm is forced up and chemical flows through the valve to the injection point. The valves are pre-set for 17 bar, however they are field adjustable from 7 – 55 bar via the adjustment screw. Installation should be as close to the injection point as possible to prevent chemical line drainage, and it is most important that all chemical system equipment such as pulsation dampeners and pressure gauges be rated to the maximum pressure set by the valve, and located between the pump and the back pressure valve. A pressure relief valve is required.

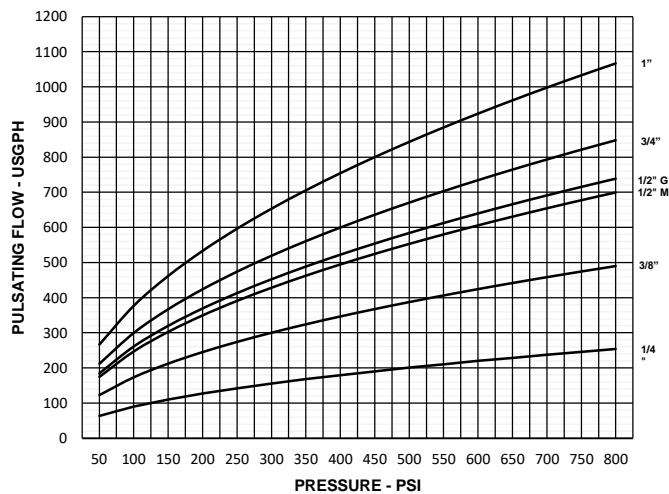
TYPICAL INSTALLATION



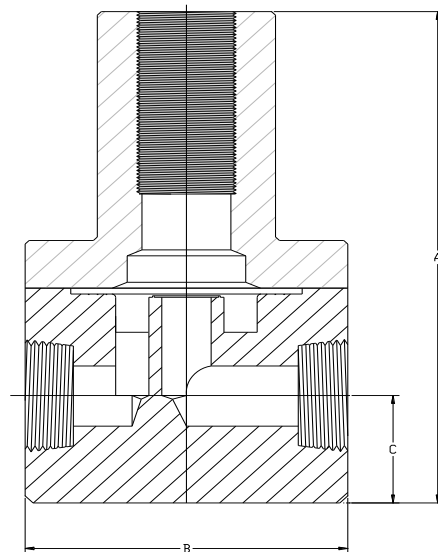
Technical Data:

Model BPMP Sizes			1/4", 3/8", 1/2", 3/4", 1"	
Connections:			NPT, BSPT, Socket, Flange (flanges not available on 1/4" and 3/8" valves)	
Pressure Adjustment			7 – 55 bar	
Flow Rates @ 55 bar			Shipping Weight: gram	
Size	Pulsating	Continuous	Metal / Metal Top	
1/4"	945 L/Hr	50 L/min	1/4"	1.360
3/8"	1.860 L/Hr	26 L/min	3/8"	1.360
1/2" M-Series	2.650 L/Hr	136 L/min	1/2" M-Series	1.814
1/2" G-Series	2.800 L/Hr	144 L/min	1/2" G-Series	4.535
3/4"	3.218 L/Hr	167 L/min	3/4"	4.535
1"	4.012 L/Hr	212 L/min	1"	4.989
Max Operating Temperature: (°C)			150°, (Peak 200°)	
Max Operating Pressure @ 21 °C			140 bar	
Materials of Construction:				
Diaphragm & Seal			PTFE / EPDM, Optional: Viton®, Hypalon®, PTFE & PTFE / Viton®	
Valve Top			316 SS	
Valve Body			316 SS, Alloy 20, Hastelloy C, Titanium	

Performance Curves:



Dimensions:



Product Codes For Ordering Back Pressure Valves:

BPMP
 1 2 3 4

1 = Size 2 = Material 3 = Spring Opt 4 = Options

M025 - 1/4" S - 316 SS Blank - 7 – 55 bar Blank - NPT Threaded
 M038 - 3/8" A - Alloy 20 V - Viton® Diaphragm
 M050 - 1/2" C - Hastelloy C TV - PTFE/Viton Diaph.
 G050 - 1/2" T - Titanium S - Socket Connection
 G075 - 3/4" F - Flange Connection
 G100 - 1" B - BSPT
 90 - 90° Configuration

DIMENSIONS: BPMP / PRMP - Series			
All Materials			
Size	A (mm)	B (mm)	C (mm)
1/4"	101,6	59,7	19,0
3/8"	101,6	59,7	19,0
1/2" M Series	119,6	59,7	27,4
1/2" G Series	160,6	88,9	28,6
3/4"	160,6	88,9	28,6
1"	160,6	88,9	31,8

Example: 3/4" Alloy 20, Viton Diaphragm – BPMPG075AV

Email: info@chemfeed.nl

Website: www.chemfeed.nl